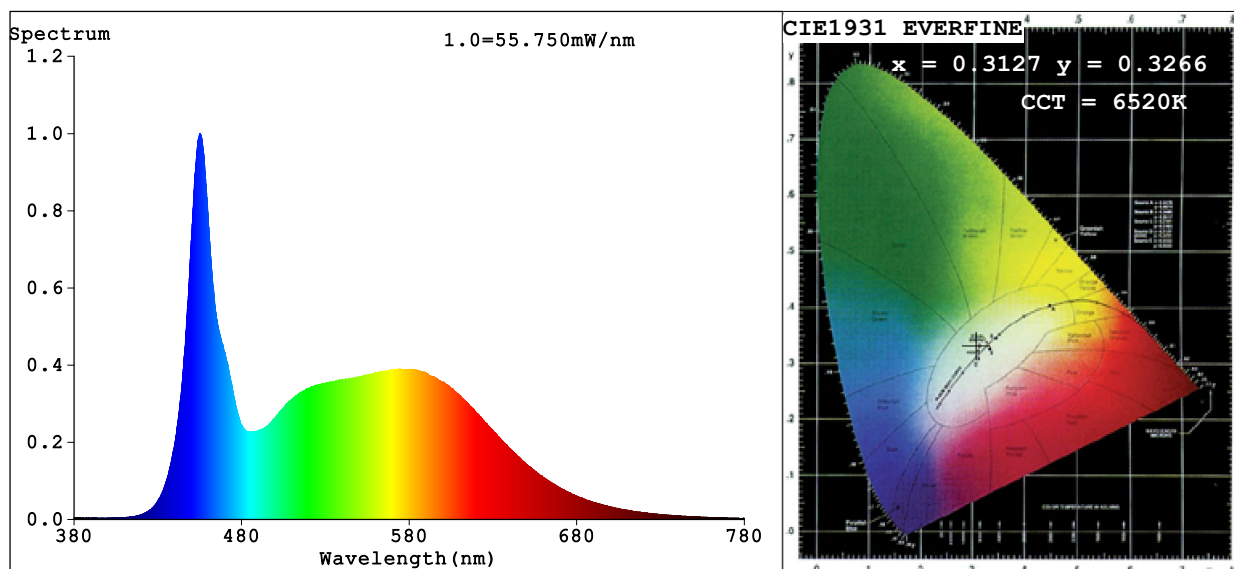


Spectrum Test Report



Color Parameters:

Chromaticity Coordinate: $x=0.3127$ $y=0.3266$ $u'=0.1988$ $v'=0.4670$

CCT=6520K (Duv=0.0019) Dominant WL:Ld =487.4nm Purity=7.5%

Ratio:R=13.7% G=79.9% B=6.4%; Peak WL:Lp=455.0nm FWHM=18.9nm

Render Index:Ra=84.2 CRI=77.6 TM30:Rf=80 Rg=92

R1 =84 R2 =93 R3 =94 R4 =80 R5 =83 R6 =87 R7 =85

R8 =68 R9 =10 R10=82 R11=80 R12=56 R13=87 R14=98 R15=79

Photo Parameters:

Flux = 1401 lm Eff. : 141.68 lm/W Fe = 4.538 W Scotopic:3248.5 S/P:2.3191

Electrical parameters:

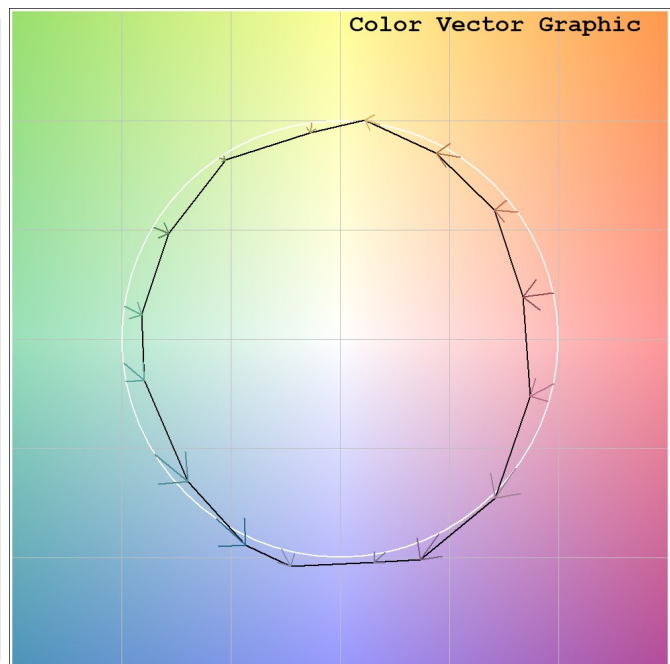
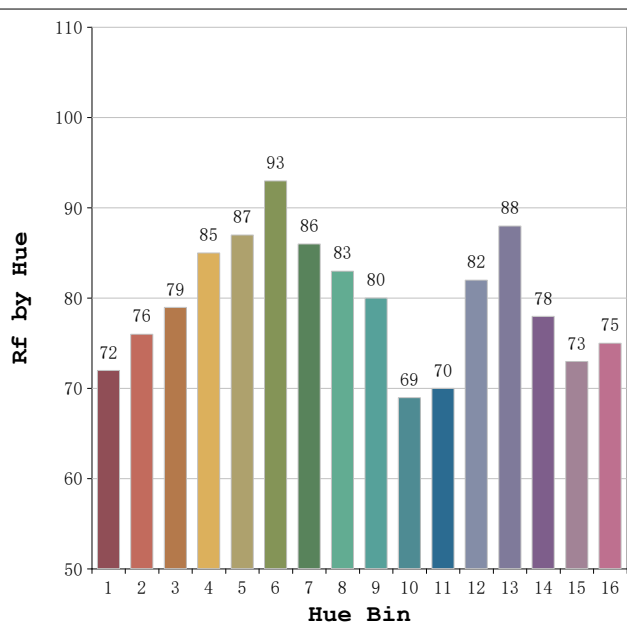
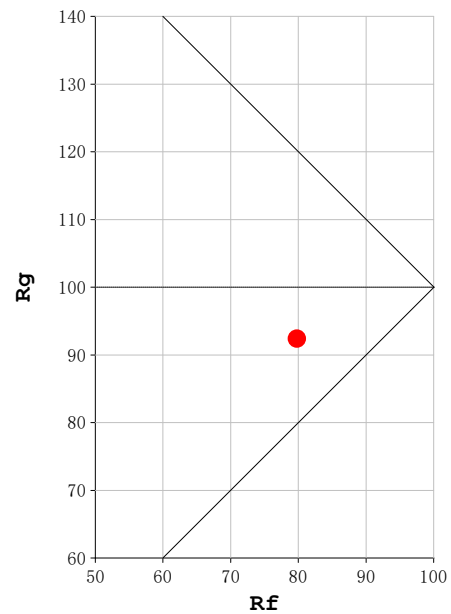
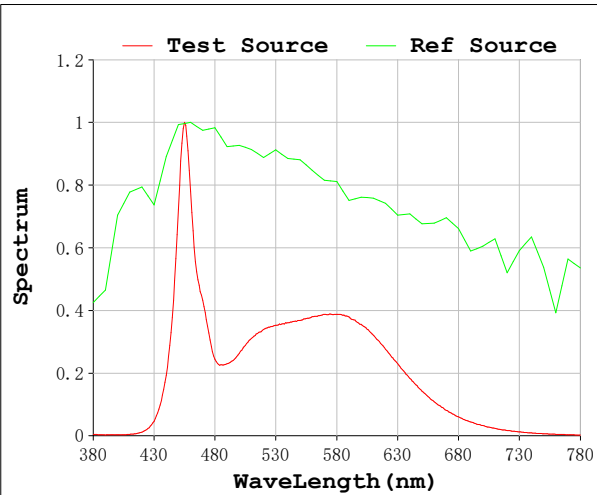
V = 23.998 V I = 0.4120 A P = 9.887 W PF = 1.000

Status: Integral T = 619 ms Ip = 51670 (79%)

Model:Ecoled Élite 10 6500K
 Tester:Sergio Carneros
 Temperature:25Deg
 Manufacturer:Luz Negra

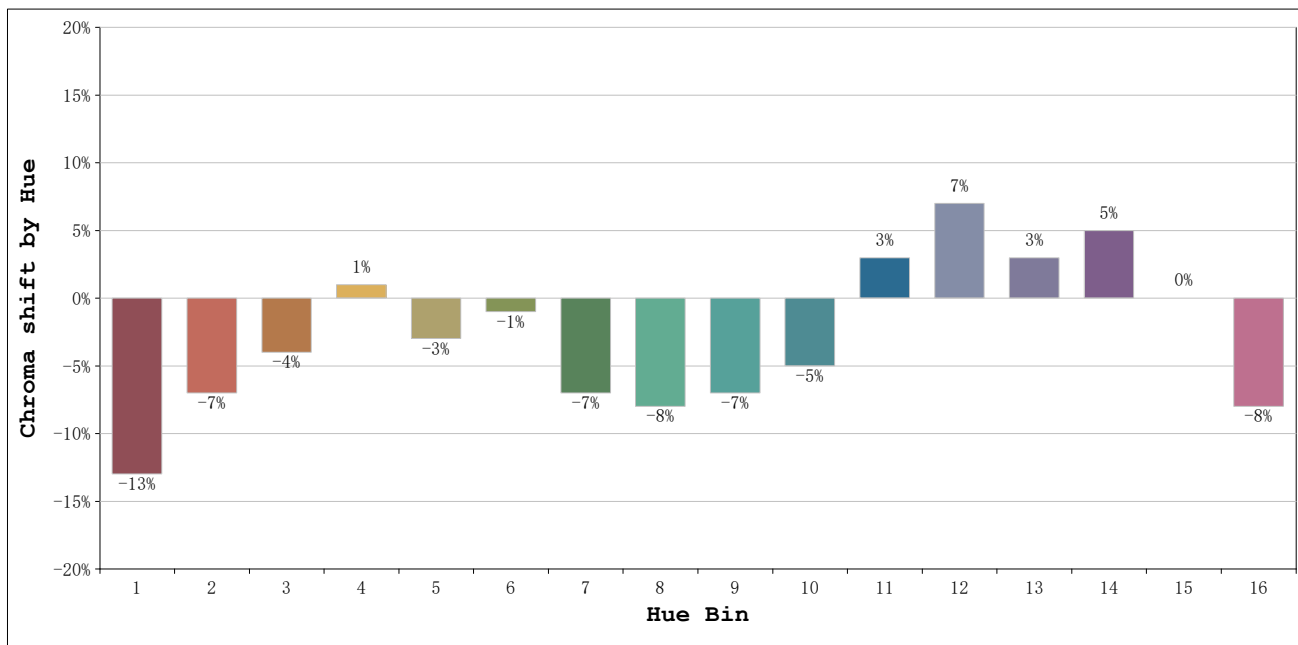
Number: 31.256
 Date:2023-05-29 14:45:53
 Humidity:57%
 Remarks:100cm de tira flexible

Rf: 80 **CCT: 6520 K** **u': 0.1988**
Rg: 92 **Duv: 0.0019** **v': 0.4670**



Model:Ecoled Élite 10 6500K
 Tester:Sergio Carneros
 Temperature:25Deg
 Manufacturer:Luz Negra

Number: 31.256
 Date:2023-05-29 14:45:53
 Humidity:57%
 Remarks:100cm de tira flexible



			Graphic shift(%)	
Hue Bin	Hue Angle	Rf	Chroma	Hue
1	0.0° - 22.5°	72	-13	1
2	22.5° - 45.0°	76	-7	7
3	45.0° - 67.5°	79	-4	10
4	67.5° - 90.0°	85	1	7
5	90.0° - 112.5°	87	-3	1
6	112.5° - 135.0°	93	-1	-1
7	135.0° - 157.5°	86	-7	-1
8	157.5° - 180.0°	83	-8	3
9	180.0° - 202.5°	80	-7	9
10	202.5° - 225.0°	69	-5	19
11	225.0° - 247.5°	70	3	18
12	247.5° - 270.0°	82	7	6
13	270.0° - 292.5°	88	3	-5
14	292.5° - 315.0°	78	5	-13
15	315.0° - 337.5°	73	0	-16
16	337.5° - 360.0°	75	-8	-7

Model:Ecoled Élite 10 6500K
 Tester:Sergio Carneros
 Temperature:25Deg
 Manufacturer:Luz Negra

Number: 31.256
 Date:2023-05-29 14:45:53
 Humidity:57%
 Remarks:100cm de tira flexible